

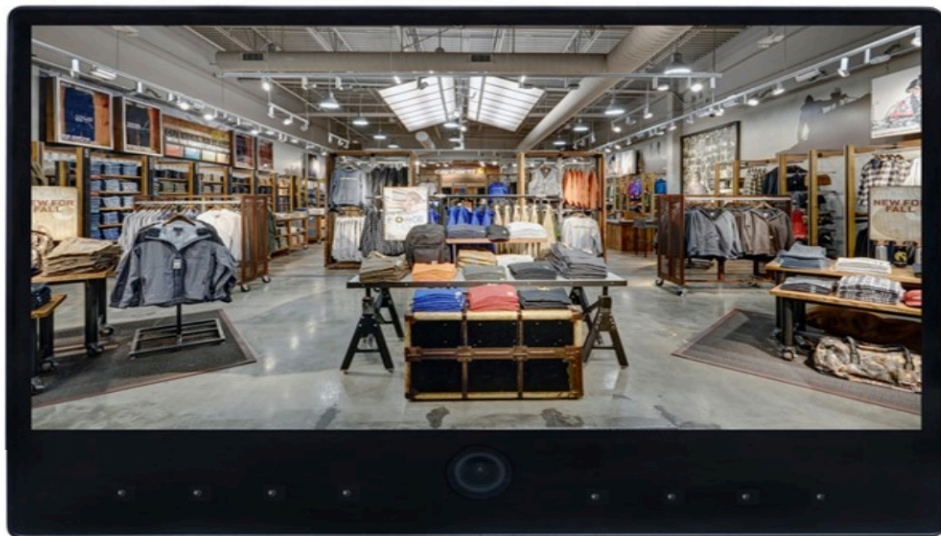
# AXIS 32" PUBLIC VIEW MONITOR

Wren PVMs offer a powerful deterrent and deliver top-notch video quality for forensic purposes, making them a smart investment that perfectly aligns with your budget.

Wren's PVMs enhance the deterrence value in targeted areas with superior attention grabbing features such as flashing LED lights and face blocking by increasing the notice-ability of the monitor. Equipped with high definition video, a PVM provides a clear impression of control to shoppers and assists in forensic investigations.

## FEATURES

- 1080P resolution
- Commercial Grade for 24/7 Use
- Auto-on Feature Eliminates Re-setting Monitor After Power Failures
- 24VDC and PoE capable
- UL Listed
- Power Supply not Included



## PROFESSIONAL SERVICES

- Expert support for location design and seamless implementation, ideal for large-scale deployments.
- Installation guides and specifications
- North America customer support



## ABOUT 3Si

- **53 years** of experience and specialized knowledge in the **Security field**
- **24/7** US-based support
- **Long-term relationships** with the industry, built on **trust and satisfaction**
- Partnered with over **10,200 law enforcement agencies**
- Over **19,000 criminals** apprehended and **\$150M** in assets recovered

## OUR END-TO-END SOLUTION



Camera & Video  
Hardware

**WREN**  
BY **3Si**

+



GPS  
Tracking

**COVERT**  
BY **3Si**

+



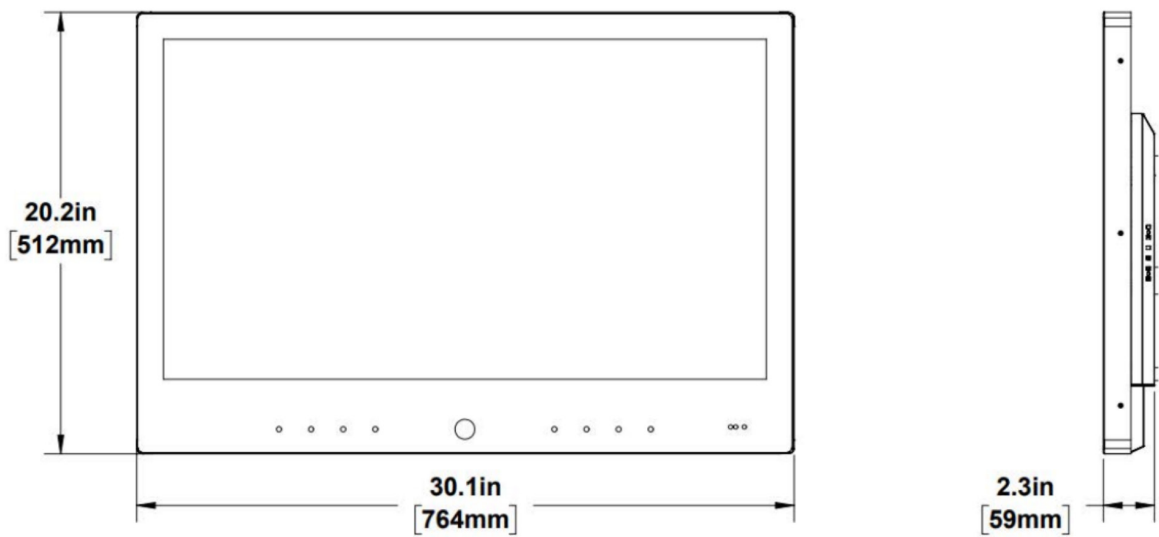
Video Management  
Systems

**SURVEILL**  
BY **3Si**



3Si.com | info@3Si.com | 800.523.1430 | © 2024 3Si. All Rights Reserved.

This document is proprietary and confidential. No part of this document may be disclosed in any manner without prior written consent of 3Si Security Systems



MODEL NUMBER PVM32-1AFA51-W	
<b>Mechanical</b>	
Housing Material	Aluminum
Color	White Housing, Black Screen
Weight	27.7 lbs.
Product Dimensions	30.1" L X 2.3" W X 20.2" T
Mounting	VESA 200x100mm pattern
<b>Display</b>	
Size	32 in.
Type	LCD
Backlight	LED
Resolution	1920x1080
Aspect Ratio	16:9
<b>Camera</b>	
Sensor	Axis FA51 with FA1105
<b>Connections</b>	
SD Card	OSD, Recording, Firmware. and Logo Updates
RJ45	IP Camera, PoE
Digital I/O	Spring Terminal (2X)
DC Power Input	Terminal Block +/- (2 position)
HDMI	Input for external video source
<b>Electrical</b>	
PoE	802.3af
DC	24VDC
<b>Environmental</b>	
Operating Temperature	32°F - 104°F (0°C - 40°C)
<b>Certifications</b>	
UL	
FCC	

71-0100-009  
Rev B 02/25

