

# 27" PUBLIC VIEW MONITOR

**Wren PVMs offer a powerful deterrent and deliver top-notch video quality for forensic purposes, making them a smart investment that perfectly aligns with your budget.**

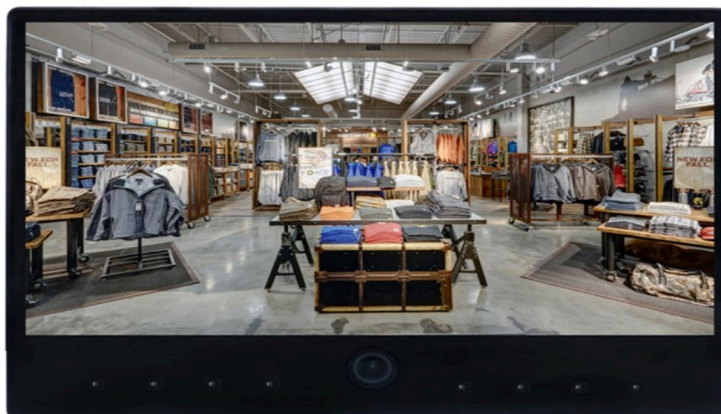
Wren's PVMs enhance the deterrence value in targeted areas with superior attention grabbing features such as flashing LED lights and face blocking by increasing the notice-ability of the monitor. Equipped with high definition video, a PVM provides a clear impression of control to shoppers and assists in forensic investigations.

## FEATURES

- 5MP WDR Camera with Varifocal Lens for Superior Image Quality
- Remote Zoom and Focus Capabilities for Simple Set up
- Power-over-Ethernet (PoE) Capable for Easy Installation
- Attention Grabbing Features Deliver High Deterrent Value
- UL Listed

## SPECIAL FEATURES

- Remote Varifocal Setting and Auto-Focus
- Faceblocking
- Video Motion Detection
- White LEDs (On, Off, Flashing, Motion On, Motion Flash)



## PROFESSIONAL SERVICES

- Expert support for location design and seamless implementation, ideal for large-scale deployments.
- Installation guides and specifications
- North America customer support



## ABOUT 3Si

- **53 years** of experience and specialized knowledge in the **Security field**
- **24/7 US-based support**
- **Long-term relationships** with the industry, built on **trust and satisfaction**
- Partnered with over **10,200 law enforcement agencies**
- Over **19,000 criminals** apprehended and **\$150M** in assets recovered

## OUR END-TO-END SOLUTION

  
Camera & Video  
Hardware

**WREN**  
BY **3Si**

+

  
GPS  
Tracking

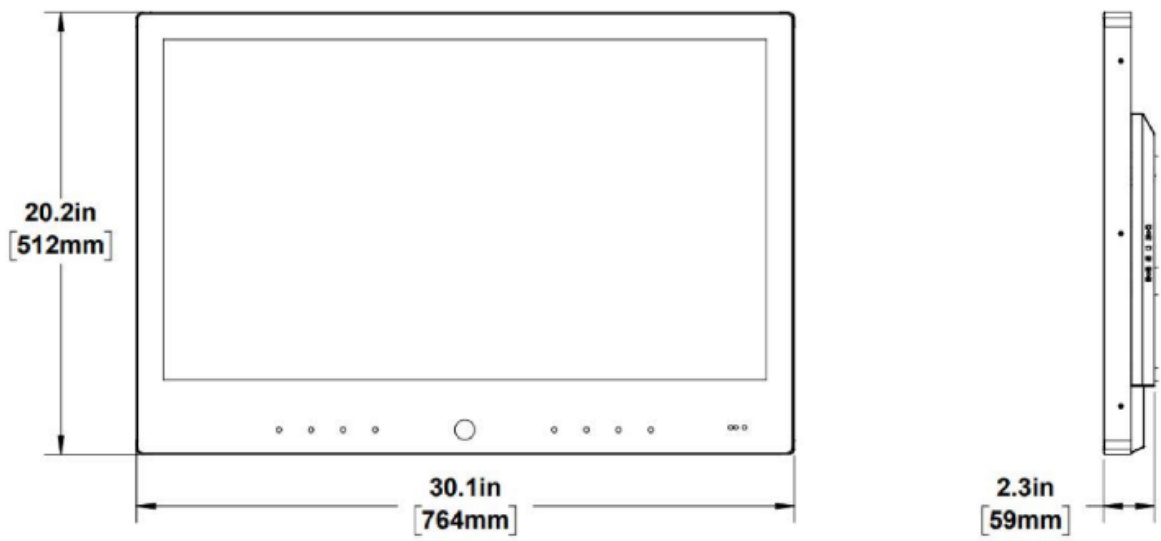
**COVERT**  
BY **3Si**

+

  
Video Management  
Systems

**SURVEILL**  
BY **3Si**





MODEL NUMBER PVM27-B-2094-B	
<b>Mechanical</b>	
Housing Material	Steel
Color	Black Steel Housing, Black Screen
Weight	18.2 lbs.
Product Dimensions	25.08" L X 17.65" W X 1.9" D
Mounting	VESA 100X100mm or 200x100mm pattern
<b>Display</b>	
Size	27 in.
Type	LCD
Backlight	LED
Resolution	1920x1080
Aspect Ratio	16:9
<b>Camera</b>	
Sensor	1/2.7" OmniVision OS05A20
<b>Connections</b>	
SD Card	Recording, Firmware, and Logo Updates
RJ45	IP Camera, PoE
Digital I/O	Spring Terminal (2X)
DC Power Input	Terminal Block +/- (2 position)
HDMI	Input for external video source
<b>Electrical</b>	
PoE	POE++ or POE Class 6
DC	24VDC
<b>Environmental</b>	
Operating Temperature	32°F - 104°F (0°C - 40°C)
<b>Certifications</b>	
UL	
FCC	

XXXXXXXXXX  
Rev B 5/25

